

Vamp D7 G7 C

A7 D7 G

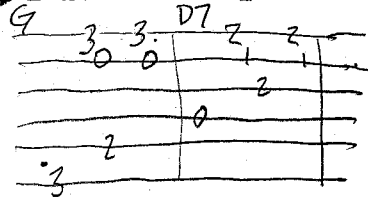
Capo 2

75

# PAGE 1

## KE KALI NEI AU (HAWAIIAN)

G<sup>F</sup>/<sub>2</sub> D7<sup>E7</sup>/<sub>2</sub> G<sup>F</sup>/<sub>2</sub> G7<sup>F</sup>/<sub>2</sub>  
C D7 C G7

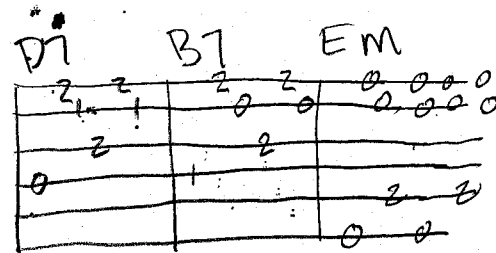


E IA AU

press hard  
F<sup>Bb</sup> C<sup>F</sup>/<sub>4</sub> G<sup>F</sup>/<sub>4</sub>

KE KALI NEI

G<sup>F</sup>/<sub>4</sub> D7<sup>E7</sup>/<sub>4</sub> A7<sup>F</sup>/<sub>4</sub> Em<sup>dim</sup>/<sub>4</sub>



A IA LA I HEA

D7 G7 A7<sup>F</sup>/<sub>4</sub> G7<sup>F</sup>/<sub>4</sub> D7<sup>F</sup>/<sub>4</sub>

KU'U ALOHA

C<sup>F</sup> G<sup>F</sup>/<sub>4</sub> D7<sup>F</sup>/<sub>4</sub> A7<sup>F</sup>/<sub>4</sub>

E IA A AU

G7 D7<sup>F</sup>/<sub>4</sub> C G<sup>F</sup>/<sub>4</sub>

KE HULI NE'I

G<sup>F</sup>/<sub>4</sub> G7 D7<sup>F</sup>/<sub>4</sub>

ALO'A O O'E E KA'IPO

D7<sup>F</sup>/<sub>4</sub> C G<sup>F</sup>/<sub>4</sub>

MA HA KA IINI A KA PUUWAI

G<sup>F</sup>/<sub>2</sub> E7<sup>F</sup>/<sub>2</sub> A7<sup>F</sup>/<sub>4</sub> D7<sup>F</sup>/<sub>6</sub>

122

A7 D7 G7 C G<sup>F</sup>/<sub>2</sub>

\* → UA SILA PA'A IA ME OE

G<sup>F</sup>/<sub>4</sub> G7 D7<sup>F</sup>/<sub>4</sub>

KO ALOHA MAKA MAE F I'PO

PAGE 2.

KE KALI NEI AU

D7/4

C G/4

KA U IA E LEI AE NEI LA

C7 G7/4

F C/4

NOU NO KA I INI

(NOU KA I'INI)

D7 A7/4

G7 D7/4

A NOU WALE NO (WALE NO)

G/2 E7/2 A7/4

C A7 D7

A O KO ALOHA KAU E

G7 D7/4

C G/4

HI'I PO I MAU

A7 E7/4

NAU OE (NAU OE) E LEI

(E LEI) A7/2 D7/2 G/4

D7 E7

NA U OE E LEI

→\*

Handwritten guitar chord diagram showing three measures. Measure 1: G chord (3-2-3 on strings 1-3). Measure 2: E7 chord (0-3-0 on strings 1-3). Measure 3: A7 chord (0-2-0 on strings 1-3).