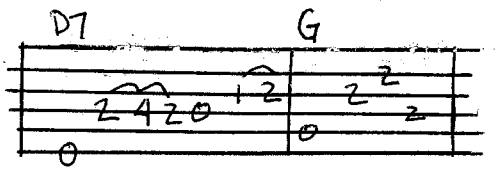


A7 D7 G D7 Hi'ilawe



2x { G G7 C G  
 Kūmaka ka 'ikena iā Hi'ilawe  
 G D7 G D7 G D7 G  
 Ka papa lohi mai a'o Maukele

2x { G G7 C G  
 Pakele mau au i ka nui manu  
 G D7 G D7 G  
 Hauwala'au nei puni Waipi'o

2x { G G7 C G  
 'A'ole nō wau e loa'a mai  
 G D7 G D7 G  
 A he uhiwai au, nō ke kuahiwi

2x { G G7 C G  
 He hiwahiwa au nā ka makua  
 G D7 G D7 G  
 A he lei 'ā'i nā ke kupuna

Nō Puna ke 'ala i hali 'ia mai

*kip*

Noho i ka wailele a'o Hi'ilawe

2x { G G7 C G  
 Ha'ina 'ia mai ana ka puana  
 G D7 G D7 G  
 Kūmaka ka 'ikena iā Hi'ilawe  
 A7 D7 G F#G